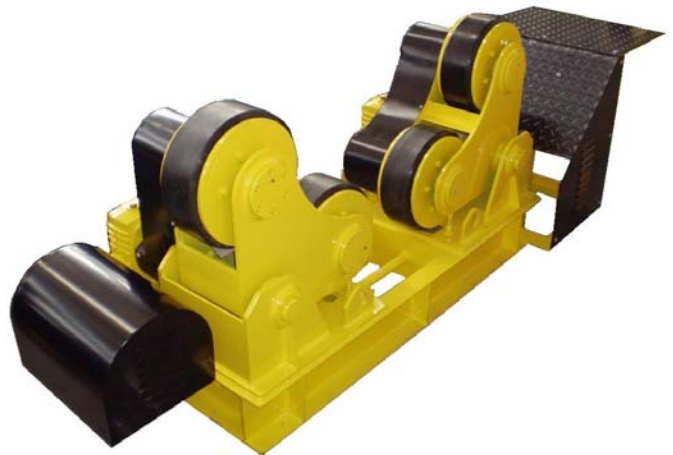


# SD 5-100 and SI 5-100

## Self-aligning Roller Beds

- Robust design with durable rollers
- Gritblasted steelwork with polyurethane finished coating to endure the abrasive environment of offshore and marine industries
- Over sized bearings
- Special formulated high-load polyurethane tire design for high wear resistance.
- Cast steel gearbox with double worm gear arrangement for smooth operation and minimum backlash
- Solid state inverter for precise speed control
- Motorised and Idler Rail Bogie variants



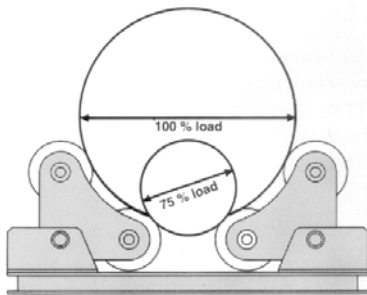
### Applications

- **Wind Tower Fabrication**
- **Offshore and Shipyards**
- **Pressure Vessels**
- **Pipe Lines**



## Technical data

Model		SD/SI-5	SD/SI-10	SD/SI-20	SD/SI-40	SD/SI-60	SD/SI-80	SD/SI-100
Max loading capacity tons/section	Drive unit	2.5	5	10	20	30	40	50
	Idler unit	2.5	5	10	20	30	40	50
Turning capacity, tons	Drive unit	5	10	20	40	60	80	100
Turning speed	mm/min	100-1000	100-1000	100-1000	100-1000	100-1000	100-1000	100-1000
Vessel diameter, mm	Min	250	320	500	600	750	850	1000
	Max	2300	2800	3500	4200	4800	5000	5500
Rubber tire size	Diam/mm	250	300	350	400	450	500	500
	Width/mm	100	120	120	120	120	120	120
Power Supply	50Hz/3ph	380/400/415V	380/400/415V	380/400/415V	380/400/415V	380/400/415V	380/400/415V	380/400/415V
	60Hz/3 ph	440/460/480V	440/460/480V	440/460/480V	440/460/480V	440/460/480V	440/460/480V	440/460/480V
Fuses	A	16	16	16	16	32	32	32
Control Voltage	V AC	24	24	24	24	24	24	24
Weight roller bed with rail bogie, kg	Drive unit	700	1000	1400	2000	2700	3400	5000
	Idler unit	300	500	600	1000	1300	1600	2500
Dimensions LxHxW	Drive unit	1900/660/626	2210/720/769	2400/790/855	2880/950/985	3090/1110/1133	3270/1140/1150	3630/1400/1320
	Idler unit	1160/400/626	1400/450/769	1650/450/855	2000/540/985	2220/665/1133	2450/650/1150	2950/730/1320
Cable control box	m	10	10	10	10	10	10	10



## Ordering Information

### Motorized unit

Roller bed SD-5	0370 250 050
Roller bed SD-10	0370 250 052
Roller bed SD-20	0370 250 054
Roller bed SD-40	0370 250 056
Roller bed SD-60	0370 250 058
Roller bed SD-80	0370 250 060
Roller bed SD-100	0370 250 062

### Idler unit

Roller bed SI-5	0370 250 051
Roller bed SI-10	0370 250 053
Roller bed SI-20	0370 250 055
Roller bed SI-40	0370 250 057
Roller bed SI-60	0370 250 059
Roller bed SI-80	0370 250 061
Roller bed SI-100	0370 250 063

## Options

Foot switch	0370 250 301
-------------	--------------



[www.esab.com](http://www.esab.com)

